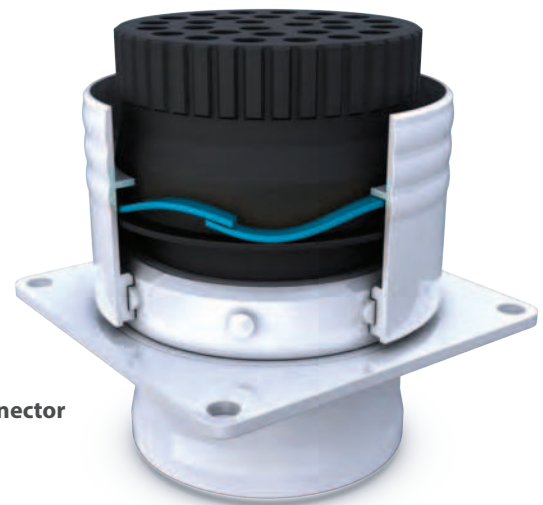
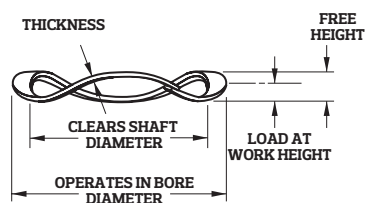
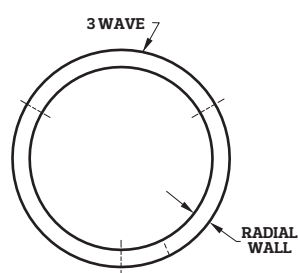


Single Turn Springs (Imperial)

YSSR Series – Overlap

Conventional Gap and Overlap Type Wave Springs are used in a wide variety of applications. For short deflections and low-medium forces, they function with precision and dependability.

These two types of Smalley Wave Springs permit radial expansion or growth in diameter within a cavity, without the binding or hang-up normally associated with die stamped wave washers. Just as their terms imply, the gap type is split to retain a gap between the ends, while the overlap type has overlapping ends. Thus, the ends are free to move circumferentially as the spring outside diameter grows during compression.



Bayonet Connector

Stock items available in:

- Carbon steel
- 17-7 PH stainless steel

Springs listed below are 3 wave **Overlap Type**.

	Part No. ¹	Operates in Bore Diameter	Clears Shaft Diameter	Load (lb)	Work Height	Free Height ²	Number of Waves	Thickness	Radial Wall	Spring Rate ³
Imperial (in.)	YSSR-0050	0,500	0,390	7	0,050	0,085	3	0,008	0,040	200
	YSSR-0062	0,625	0,480	10	0,050	0,095	3	0,010	0,058	222
	YSSR-0075	0,750	0,500	14	0,062	0,160	3	0,010	0,078	143
	YSSR-0087	0,875	0,620	16	0,062	0,130	3	0,012	0,094	235
	YSSR-0100	1,000	0,780	18	0,062	0,160	3	0,012	0,094	184
	YSSR-0112	1,125	0,840	20	0,078	0,130	3	0,016	0,133	385
	YSSR-0125	1,250	0,960	22	0,078	0,150	3	0,016	0,133	306
	YSSR-0137	1,375	1,090	24	0,078	0,190	3	0,016	0,133	214
	YSSR-0150	1,500	1,170	26	0,078	0,170	3	0,018	0,143	283
	YSSR-0162	1,625	1,310	28	0,078	0,200	3	0,018	0,143	230

¹ Add suffix "-S17" for 17-7 stainless steel. ² Reference dimension. ³ Theoretical dimension; measured in lb/in.

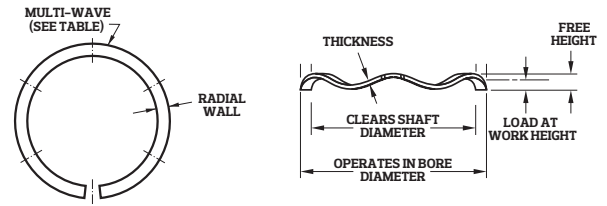
Single Turn Springs (Imperial)

YSSR Series – Gap

Stock items available in:

- Carbon steel
- 17-7 PH stainless steel

Springs listed below are 4 waves and up, **Gap Type**.



Imperial (in.)	Part No. ¹	Operates in Bore Diameter	Clears Shaft Diameter	Load (lb)	Work Height	Free Height ²	Number of Waves	Thickness	Radial Wall	Spring Rate ³
		YSSR-0175	1,750	1,440	30	0,078	0,140	4	0,018	0,143
	YSSR-0187	1,875	1,560	32	0,078	0,150	4	0,018	0,143	444
	YSSR-0200	2,000	1,680	34	0,093	0,140	4	0,024	0,150	723
	YSSR-0212	2,125	1,800	36	0,093	0,150	4	0,024	0,150	632
	YSSR-0225	2,250	1,930	38	0,093	0,170	4	0,024	0,150	494
	YSSR-0237	2,375	1,990	40	0,093	0,160	4	0,024	0,178	597
	YSSR-0250	2,500	2,120	42	0,093	0,170	4	0,024	0,178	545
	YSSR-0262	2,625	2,240	44	0,093	0,190	4	0,024	0,178	454
	YSSR-0275	2,750	2,340	46	0,109	0,170	4	0,030	0,188	754
	YSSR-0287	2,875	2,470	48	0,109	0,180	4	0,030	0,188	676
	YSSR-0300	3,000	2,590	50	0,109	0,190	4	0,030	0,188	617
	YSSR-0312	3,125	2,710	52	0,109	0,210	4	0,030	0,188	515
	YSSR-0325	3,250	2,750	54	0,109	0,200	4	0,030	0,233	593
	YSSR-0337	3,375	2,840	56	0,109	0,220	4	0,030	0,233	505
	YSSR-0350	3,500	3,000	58	0,109	0,230	4	0,030	0,233	479
	YSSR-0362	3,625	3,120	60	0,109	0,240	4	0,030	0,233	458
	YSSR-0375	3,750	3,250	62	0,109	0,260	4	0,030	0,233	411
	YSSR-0387	3,875	3,370	64	0,109	0,300	4	0,030	0,233	335
	YSSR-0400	4,000	3,500	66	0,109	0,190	5	0,030	0,233	815
	YSSR-0412	4,125	3,620	67	0,109	0,200	5	0,030	0,233	736
	YSSR-0425	4,250	3,740	69	0,109	0,210	5	0,030	0,233	683
	YSSR-0437	4,375	3,860	70	0,109	0,210	5	0,030	0,233	693
	YSSR-0450	4,500	3,990	72	0,109	0,230	5	0,030	0,233	595
	YSSR-0462	4,625	4,110	73	0,125	0,270	5	0,030	0,233	503
	YSSR-0475	4,750	4,240	75	0,125	0,310	5	0,030	0,233	405
	YSSR-0487	4,875	4,370	76	0,125	0,290	5	0,030	0,233	461
	YSSR-0500	5,000	4,490	78	0,125	0,310	5	0,030	0,233	422
	YSSR-0512	5,125	4,610	80	0,125	0,340	5	0,030	0,233	372
	YSSR-0525	5,250	4,740	82	0,125	0,370	5	0,030	0,233	335
	YSSR-0537	5,375	4,860	84	0,125	0,380	5	0,030	0,233	329
	YSSR-0550	5,500	4,990	86	0,125	0,250	6	0,030	0,233	688
	YSSR-0562	5,625	5,110	88	0,125	0,270	6	0,030	0,233	607
	YSSR-0575	5,750	5,240	90	0,125	0,280	6	0,030	0,233	581
	YSSR-0587	5,875	5,360	92	0,125	0,300	6	0,030	0,233	526
	YSSR-0600	6,000	5,490	94	0,125	0,300	6	0,030	0,233	537
	YSSR-0612	6,125	5,610	96	0,125	0,310	6	0,030	0,233	519
	YSSR-0625	6,250	5,730	98	0,125	0,340	6	0,030	0,233	456
	YSSR-0637	6,375	5,860	100	0,125	0,350	6	0,030	0,233	444
	YSSR-0650	6,500	5,980	102	0,125	0,390	6	0,030	0,233	385
	YSSR-0675	6,750	6,230	104	0,125	0,420	6	0,030	0,233	353
	YSSR-0700	7,000	6,160	106	0,156	0,320	6	0,032	0,375	646
	YSSR-0725	7,250	6,440	108	0,156	0,350	6	0,032	0,375	557
	YSSR-0750	7,500	6,690	110	0,156	0,360	6	0,032	0,375	539
	YSSR-0775	7,750	6,940	114	0,156	0,380	6	0,032	0,375	509
	YSSR-0800	8,000	7,190	118	0,156	0,390	6	0,032	0,375	504
	YSSR-0825	8,250	7,440	122	0,156	0,430	6	0,032	0,375	445
	YSSR-0850	8,500	7,680	126	0,156	0,340	7	0,032	0,375	685
	YSSR-0875	8,750	7,930	130	0,156	0,340	7	0,032	0,375	707
	YSSR-0900	9,000	8,180	134	0,156	0,290	8	0,032	0,375	1000
	YSSR-0950	9,500	8,680	142	0,156	0,240	9	0,032	0,375	1690
	YSSR-1000	10,000	9,170	150	0,156	0,290	9	0,032	0,375	1119
	YSSR-1050	10,500	9,670	158	0,156	0,310	9	0,032	0,375	1026
	YSSR-1100	11,000	10,170	166	0,156	0,350	9	0,032	0,375	856
	YSSR-1150	11,500	10,660	174	0,156	0,360	9	0,032	0,375	853
	YSSR-1200	12,000	11,160	182	0,156	0,440	9	0,032	0,375	641
	YSSR-1250	12,500	11,660	190	0,156	0,350	10	0,032	0,375	979
	YSSR-1300	13,000	12,160	198	0,156	0,410	10	0,032	0,375	780
	YSSR-1350	13,500	12,650	206	0,156	0,430	10	0,032	0,375	752
	YSSR-1400	14,000	13,150	214	0,156	0,300	12	0,032	0,375	1486
	YSSR-1450	14,500	13,650	221	0,156	0,320	12	0,032	0,375	1348
	YSSR-1500	15,000	14,130	230	0,156	0,350	12	0,032	0,375	1186
	YSSR-1550	15,500	14,640	239	0,156	0,310	13	0,032	0,375	1552
	YSSR-1600	16,000	15,140	248	0,156	0,340	13	0,032	0,375	1348

¹ Add suffix "-S17" for 17-7 stainless steel. ² Reference dimension. ³ Theoretical dimension; measured in lb/in.